

## Data Perusahaan

### Company Data

#### Modal Saham dan Ekuitas Share Capital and Equity

Posisi per tanggal 31 Desember 2013 modal dasar Bank adalah sebesar Rp12.000.000 juta (12.000.000 saham dengan nilai nominal Rp1.000.000 per lembar saham), di mana sejumlah Rp3.269.574 juta (3.269.574 saham) telah ditempatkan dan disetor oleh para pemegang saham sebagai berikut:

As of December 31, 2013, the Bank's authorized capital amounted to Rp12,000,000 million (12,000,000 shares at a par value of Rp1,000,000 per share), of which Rp3,269,574 million (3,269,574 shares) were issued and paid-up by the following shareholders:

Pemegang Saham / Shareholders	Jumlah Saham / Number of Shares	Nilai Nominal / Par Value (dalam ribuan rupiah / in thousand rupiah)	%
Mizuho Corporate Bank, Ltd, Japan	3.236.877	3.236.877.000	99
PT Bank Negara Indonesia (Persero), Tbk	32.697	32.697.000	1
	3.269.574	3.269.574.000	100

Pemegang saham pengendali akhir (ultimate shareholder) Bank adalah Mizuho Financial Group Inc. ("MHFG"), yang berkedudukan di Jepang. MHFG memiliki anak perusahaan dan perusahaan afiliasi lainnya yang tersebar di seluruh dunia.

The ultimate shareholder of Bank is Mizuho Financial Group Inc. ("MHFG"), which is incorporated in Japan. MHFG has subsidiaries and affiliates throughout the world.

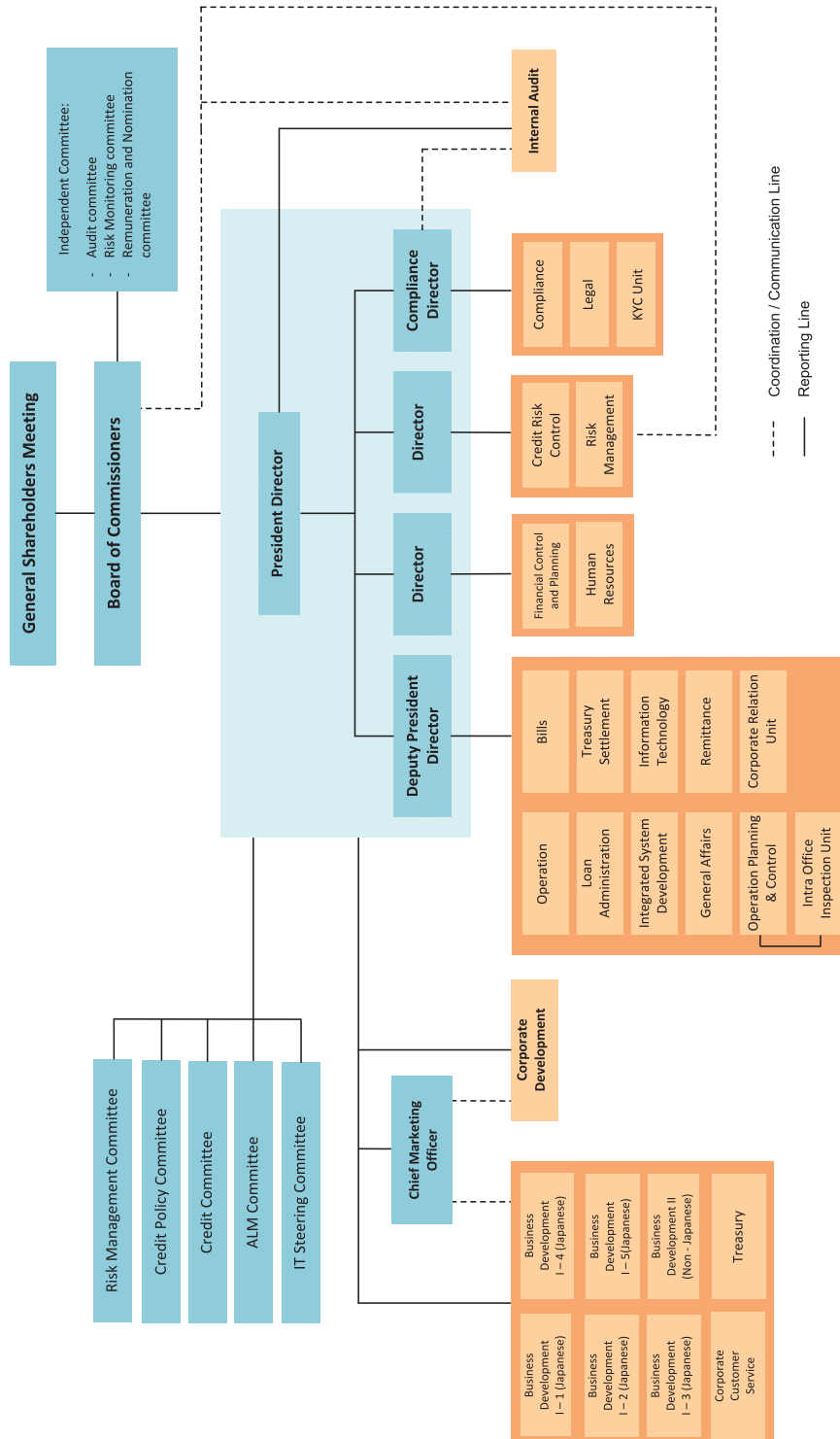
Ekuitas Bank pada tanggal 31 Desember 2013 sebesar Rp6.106 miliar. Kenaikan ekuitas ini berasal dari peningkatan modal ditempatkan dan disetor penuh dan akumulasi laba sepanjang tahun.

The Bank's equity as of December 31, 2013 stood at Rp6,106 billion. The increase in equity derived from the increase of issued and fully paid-up capital and accumulated income during the year.

	2013 (dalam jutaan Rupiah / Millions of Rupiah)	2012 (dalam jutaan Rupiah / Millions of Rupiah)
Modal Ditempatkan dan Disetor Penuh / Issued and fully paid-up Capital	3.269.574	1.323.574
Tambahan Modal Disetor / Additional Paid-up Capital	8.125	8.125
Kerugian yang belum direalisasi atas perubahan nilai wajar surat-surat berharga yang tersedia untuk dijual - setelah dikurangi pajak tangguhan / Unrealized loss on changes in fair value of available-for-sale marketable securities - net of deferred tax	(636)	(278)
Saldo Laba / Retained Earnings		
- Telah ditentukan penggunaannya / Appropriated	653.915	264.719
- Belum ditentukan penggunaannya / Unappropriated	2.174.827	2.075.341
Jumlah Ekuitas / Total Equity	6.105.805	3.671.481

## Struktur Organisasi Organization Structure

Per 31 Desember 2013 / As of December 31<sup>st</sup>, 2013



## Profil Dewan Komisaris

### The Board of Commissioners Profile

#### Rusdi Abdullah Djamil

Presiden Komisaris (Komisaris Independen) / [President Commissioner \(Independent Commissioner\)](#)



Berkebangsaan Indonesia, beliau lulus dari Fakultas Ekonomi, Universitas Indonesia, Jakarta, Indonesia. Beliau menjabat sebagai Presiden Komisaris PT Bank Mizuho Indonesia sejak tanggal 01 Oktober 2001. Beliau bergabung dengan Bank Negara Indonesia di Jakarta pada tahun 1963 hingga 1992 dengan jabatan terakhir sebagai Direktur yang membawahi Divisi Personalia & Pendidikan, Divisi Pengembangan Produk & Divisi Pemasaran dan Teknologi. Jabatan-jabatan di luar BNI, antara lain sebagai Presiden Komisaris di PT Finconesia, PT Swadharma Duta, sebagai Direktur Utama di PT Finconesia. Jabatan terakhir beliau sebagai Presiden Komisaris PT Bank IBJ Indonesia.

Rusdi Abdullah Djamil, an Indonesian citizen, graduated from the Faculty of Economics of the University of Indonesia in Jakarta, Indonesia. He has been PT Bank Mizuho Indonesia's President Commissioner since October 01<sup>st</sup>, 2001. He started his career in 1963 at Bank Negara Indonesia (BNI), Jakarta until 1992 with his last position as Director of the Personnel & Education, Product Development & Marketing and Technology Divisions. Other positions held outside BNI included President Commissioner of PT Finconesia, President Commissioner of PT Swadharma Duta, and President Director of PT Finconesia. His previous position was as President Commissioner of PT Bank IBJ Indonesia.

#### Katsuyuki Mizuma

Komisaris / [Commissioner](#)



Katsuyuki Mizuma, berkebangsaan Jepang, beliau menjabat sebagai Komisaris PT Bank Mizuho Indonesia sejak tanggal 19 Oktober 2012. Beliau mengawali karirnya di tahun 1984 di The Industrial Bank of Japan, Ltd., Japan dan telah bekerja di Jepang, Hongkong, USA dan Singapura. Jabatan terakhir beliau sebagai *General Manager of Asia & Oceania Division* di Mizuho Bank, Ltd.

Katsuyuki Mizuma, a Japanese citizen, has been a Commissioner of PT Bank Mizuho Indonesia since October 19<sup>th</sup>, 2012. He started his career in 1984 at The Industrial Bank of Japan, Ltd., Japan and has worked in Japan, Hong Kong, USA and Singapore. His previous position is *General Manager of Asia & Oceania Division* at Mizuho Bank, Ltd.

## Azuma Sato

Komisaris / [Commissioner](#)



Azuma Sato, berkebangsaan Jepang, beliau menjabat sebagai Komisaris PT Bank Mizuho Indonesia sejak tanggal 16 Januari 2012. Beliau memulai karirnya di tahun 1988 di Dai-Ichi Kangyo Bank, Japan dan telah bekerja di Jepang, USA, dan Singapura. Jabatan terakhir beliau adalah sebagai *General Manager of Shinjuku-Chuo Branch Division II* di Mizuho Bank, Ltd.

[Azuma Sato, a Japanese citizen, has been a Commissioner of PT Bank Mizuho Indonesia since January 16, 2012. He started his career in 1988 at Dai-Ichi Kangyo Bank, Japan and has worked in Japan, USA and Singapore. His previous position was General Manager of Shinjuku-Chuo Branch Division II at Mizuho Bank, Ltd.](#)

## Muhamad Muchtar

Komisaris Independen / [Commissioner Independent](#)



Berkebangsaan Indonesia, beliau menjabat sebagai Komisaris PT Bank Mizuho Indonesia sejak tanggal 05 Juli 2007. Beliau bergabung dengan Bank Negara Indonesia di Jakarta pada tahun 1979 hingga 1998 dengan jabatan terakhir sebagai *General Manager* di Kantor Cabang Singapura. Jabatan-jabatan di luar BNI, antara lain sebagai *Managing Director* dan *Direktur Utama* di Indover Bank, Amsterdam, dan sebagai *Chairman of Board of Directors* Indover Asia Limited, HongKong. Jabatan terakhir beliau sebagai Konsultan Perbankan dan Keuangan.

[Muhamad Muchtar, an Indonesian citizen, has been a Commissioner of PT Bank Mizuho Indonesia since July 05<sup>th</sup>, 2007. He started his career in 1979 at Bank Negara Indonesia \(BNI\), Jakarta until 1998 with his last position there as General Manager of the Singapore Branch. Other positions he held outside BNI have included Managing Director and President Director of Indover Bank, Amsterdam and as Chairman of the Board of Directors of Indover Asia Limited, HongKong. His previous position was consultant in Banking and Finance.](#)

## Profil Direksi

### The Board of Directors Profile

#### Akihiro Saito

Presiden Direktur / [President Director](#)



Berkebangsaan Jepang, beliau lulus dari Fakultas Hukum, Universitas Tohoku, Sendai, Jepang. Beliau menjabat sebagai Presiden Direktur PT Bank Mizuho Indonesia sejak tanggal 14 Oktober 2011. Beliau memulai karirnya di The Fuji Bank Limited, Japan pada tahun 1985. Selama karirnya beliau pernah ditempatkan di Jepang dan di Bahrain. Jabatan terakhir sebagai *General Manager* di kantor cabang Mizuho Corporate Bank, Ltd. di Hanoi, Vietnam, sampai dengan bulan April 2011.

[Akihiro Saito](#), a Japanese citizen, graduated from the Law Faculty of Tohoku University in Sendai, Japan. He has been a President Director of PT Bank Mizuho Indonesia since October 14<sup>th</sup>, 2011. He started his career in 1985 at The Fuji Bank, Limited, Japan, and has worked in Japan and Bahrain during his career. His previous position was General Manager in Mizuho Corporate Bank, Ltd. of the Hanoi Branch in Vietnam until April 2011.

#### Hideki Takemoto

Wakil Presiden Direktur / [Deputy President Director](#)



Berkebangsaan Jepang, beliau lulus dari Fakultas Hukum, Universitas Kyoto di Kyoto, Jepang. Beliau menjabat sebagai Wakil Presiden Direktur PT Bank Mizuho Indonesia sejak tanggal 01 Desember 2010. Beliau memulai karirnya di The Industrial Bank of Japan, Limited, Japan pada tahun 1989. Selama karirnya beliau pernah ditempatkan di Jepang, Cina, Singapura dan India. Jabatan terakhir sebagai *Senior Manager* di Mizuho Corporate Bank, Ltd. di Singapura.

[Hideki Takemoto](#), a Japanese citizen, graduated from the Law Faculty of Kyoto University in Kyoto, Japan, and has been a Deputy President Director of PT Bank Mizuho Indonesia since December 01<sup>st</sup>, 2010. He started his career in 1989 at The Industrial Bank of Japan, Limited, and has worked in Japan, China, Singapore and India during his career. His previous position was Senior Manager in Asia Division, Mizuho Corporate Bank, Ltd. in Singapore.

## Sunarindrati Tjahjono

Direktur / Director



Berkebangsaan Indonesia, beliau lulus dari Fakultas Hukum Universitas Gajah Mada, Yogyakarta, Indonesia. Beliau menjabat sebagai Direktur PT Bank Mizuho Indonesia sejak tanggal 18 Juni 2002. Beliau bergabung dengan Bank Indonesia di Jakarta pada tahun 1964. Jabatan-jabatan terakhir beliau di Bank Indonesia adalah sebagai Wakil Kepala Urusan Luar Negeri pada tahun 1985 dan sebagai Wakil Kepala Urusan Devisa pada tahun 1992. Selanjutnya, beliau mendapat kepercayaan sebagai Ketua Dewan Audit PT Bank IBJ Indonesia dari tahun 1995 sampai tahun 1999.

Sunarindrati Tjahjono, an Indonesian citizen, graduated from the Law Faculty of Gajah Mada University in Yogyakarta, Indonesia. She has been with PT Bank Mizuho Indonesia as a Director since June 18<sup>th</sup>, 2002. She started her career in 1964 at Bank Indonesia, Jakarta. Her last position there was Deputy Head of the International Affairs Department in 1985 and Deputy Head of the Foreign Exchange Department in 1982. Following that, she was the Head of the Audit Committee of PT Bank IBJ Indonesia from 1995 to 1999.

## Silvia Lidwina Schram

Direktur / Director



Berkebangsaan Indonesia, beliau lulus dari Fakultas Ekonomi Jurusan Akuntansi, Universitas Trisakti Jakarta, Indonesia. Beliau menjabat sebagai Direktur PT Bank Mizuho Indonesia sejak tanggal 10 Juli 2008. Beliau memulai karir di PT Bank IBJ Indonesia, Jakarta pada tahun 1989. Jabatan terakhir sebagai *Deputy Director* dan Kepala Bagian *Financial Control and Planning*.

Silvia Lidwina Schram, an Indonesian citizen, graduated from the Economics Faculty of Trisakti University in Jakarta, Indonesia, majoring in Accounting. She has been a Director of PT Bank Mizuho Indonesia since July 10<sup>th</sup>, 2008. Her career in banking started in 1989 at PT Bank IBJ Indonesia, Jakarta. Her previous position was Deputy Director and Head of Financial Control and Planning Department in PT Bank Mizuho Indonesia.

## Leonard Wilson Lay

Direktur / [Director](#)



Berkebangsaan Indonesia, beliau lulus dari University of Wisconsin, Madison dan menyangg gelar MBA dari Oregon State University, Corvallis, USA. Beliau menjabat sebagai Direktur PT Bank Mizuho Indonesia sejak tanggal 10 Juli 2008. Beliau memulai karir di bidang perbankan sejak Agustus 1993 di PT Bank Central Asia, Tbk., kemudian bergabung dengan The Nippon Credit Bank dan kemudian PT Bank Fuji International Indonesia. Jabatan terakhir sebagai *Deputy Director* dan Kepala *Bagian Credit Risk Control*.

[Leonard Wilson Lay](#), an Indonesian citizen, graduated from the University of Wisconsin, Madison, as well as from Oregon State University, Corvallis, USA with an MBA. He has been a Director of PT Bank Mizuho Indonesia since July 10<sup>th</sup>, 2008. He started his career in 1993 at PT Bank Central Asia, Tbk., then later moved to The Nippon Credit Bank, and afterwards, joined PT Bank Fuji International Indonesia. His previous position was Deputy Director and Head of the Credit Risk Control Department.

## Komite-Komite Di Bawah Dewan Komisaris

### Committees under the Board of Commissioners

#### Komite Audit Audit Committee

Ketua (Komisaris Independen) / [Chairman \(Independent Commissioner\)](#) : Rusdi Abdullah Djamil  
Anggota Independen / [Independent member](#) : Ahmad Herlanto Anggono  
Anggota Independen / [Independent member](#) : Usmansjah Sulaiman

#### Komite Pemantau Risiko Risk Monitoring Committee

Ketua (Komisaris Independen) / [Chairman \(Independent Commissioner\)](#) : Muhamad Muchtar  
Anggota Independen / [Independent member](#) : Ian Febrian  
Anggota Independen / [Independent member](#) : Nanny Dewi

#### Komite Nominasi dan Remunerasi Nomination and Remuneration Committee

Ketua (Komisaris Independen) / [Chairman \(Independent Commissioner\)](#) : Rusdi Abdullah Djamil  
Anggota (Komisaris) / [member \(Commissioner\)](#) : Azuma Sato  
Anggota (Komisaris Independen) / [member \(Independent Commissioner\)](#) : Muhamad Muchtar  
Anggota / [member](#) : Bowo Trahutomo Suharso



## Pejabat Eksekutif Bank

Executive Officials of The Bank

<b>Chief Marketing Officer</b>	: Mikiro Yamamoto
<b>Business Promotion</b>	
Business Development I - 1 (Japanese Account)	: Yuichi Shibata
Business Development I - 2 (Japanese Account)	: Takahiro Higashi
Business Development I - 3 (Japanese Account)	: Haruya Maki
Business Development I - 4 (Japanese Account)	: Satoshi Yoshimitsu
Business Development I - 5 (Japanese Account)	: Takayuki Hanabuchi
Business Development II (Non Japanese Account)	: Heryanto Ali
Treasury	: Ken Inoue
Corporate Development	: Yusuke Watanabe
<b>Business Processing</b>	
Corporate Customer Service	: Jenny Luciana Widjaya
Operation	: Hebron Purdit Nappi
Bills	: Elly Susana
Remittance	: Djadi Lee
Treasury Settlement	: Sri Rahayu
<b>Credit Risk / Administration</b>	
Credit Risk Control	: Supriyanto
Loan Administration	: Widya Pratiwi Anggraeni
<b>Administration</b>	
Legal	: Nico Agusta
Human Resources	: Bowo Trahutomo Suharso
General Affairs	: Tiwik Kusmartanti
Information Technology	: Luckman Setiawan Mulia
<b>Planning and Control</b>	
Operations Planning and Control	: Tetsuya Tsunekage
Financial Control and Planning	: Adang Aminudin
Risk Management	: Medy Aswin
Compliance	: Witantri Kusumarani
Internal Audit	: Yuliani Taufan
Integrated System Development	: Roy Djajakusli

## Produk dan Jasa

### Products and Services

#### Pinjaman / Loans

- |                                       |                                 |
|---------------------------------------|---------------------------------|
| • Pinjaman Modal Kerja                | • Working Capital Loan          |
| • Pinjaman Investasi                  | • Investment Loan               |
| • Invoice Discounting Financing (IDF) | • Invoice Discounting Financing |

#### Deposito / Deposits

- |                         |                    |
|-------------------------|--------------------|
| • Giro / Rekening Koran | • Current Account  |
| • Rekening Tabungan     | • Ordinary Account |
| • Deposito Berjangka    | • Time Deposit     |

#### Remittances

- |  |   |
|--|---|
| • Penerimaan Valuta Asing                                | • Incoming Remittance in Foreign Currency |
| • Pengiriman Valuta Asing                                | • Outgoing Remittance in Foreign Currency |
| • Penerimaan Uang (Lalu Lintas Rupiah di Dalam Negeri)   | • Incoming Remittance in Local Currency   |
| • Pengiriman Uang (Lalu Lintas Rupiah di Dalam Negeri)   | • Outgoing Remittance in Local Currency   |
| • Penerimaan Uang Masuk dari Transaksi Drawback (Rupiah) | • Drawback Remittance (Rupiah)            |

#### Kegiatan Ekspor & Impor / Exports & Imports Activities

- |                                     |                               |
|-------------------------------------|-------------------------------|
| • Ekspor                            | • Exports                     |
| • Negosiasi Ekspor                  | • Negotiation of Export Bills |
| • Forfeiting (Bills Bought)         | • Forfeiting (Bills Bought)   |
| • Inkaso Dokumen Ekspor             | • Outward Collections         |
| • Penerusan Ekspor L/C              | • Advising Letters of Credit  |
| • Impor                             | • Import                      |
| • Pembukaan Kredit Berdokumen (L/C) | • Letter of Credit Issuance   |
| • Akseptasi                         | • Acceptance                  |
| • Trust Receipt                     | • Trust Receipt               |
| • On-line Import Taxes              | • On-line Import Taxes        |
| • Inkaso Dokumen Impor              | • Inward Collections          |

#### Bank Garansi / Bank Guarantees

- |  |  |
|--|--|
| • Bid Bond, Advance Payment Bond, Performance Bond | • Bid Bond, Advance Payment Bond, Performance Bond |
| • Stand-by Letter of Credit (SBLC)                 | • Stand-by Letter of Credit (SBLC)                 |
| • Bank Garansi (Bapeksta dan Bea Cukai)            | • Bank Guarantee (Bapeksta and Custom)             |

#### Valuta Asing - Derivatif / Foreign Exchange - Derivatives

- Spot
  - Forward
  - Swap
  - Average Type Forex Forward
  - Cross Currency Swap (CCS)
  - Forex Option
  - Interest Rate Swap (IRS)
- Spot
  - Forward
  - Swap
  - Average Type Forex Forward
  - Cross Currency Swap (CCS)
  - Forex Option
  - Interest Rate Swap (IRS)

#### Jasa Pelayanan Perbankan / Banking Services

- Penukaran Valuta Asing
  - Inkaso
  - Pembelian Traveler's Cheque
  - Pelaksanaan Pembayaran Pajak Secara On-line
  - Jasa Kas Manajemen
    - Layanan Jemputan Dokumen
    - *Pooling*
  - Internet Perbankan
    - *Mizuho Global CMS*
    - *Mizuho Global CMS On-Line* Deposito Berjangka
    - *Mizuho Global CMS On-Line* Pembayaran Pajak Impor (PIB)
    - *Mizuho Global CMS On-Line* Pembukaan Kredit Berdokumen (L/C)
    - *Mizuho Global CMS On-Line* Pembayaran Pajak (E-Tax)
    - Advisory Business Services
    - Best Receiver Services
- Foreign Exchange Notes
  - Cheque Collections
  - Traveler's Cheque Purchases
  - On-line Tax Payments
  - Cash Management Services
    - Pick-Up Services
    - *Pooling*
  - Internet Banking
    - *Mizuho Global CMS*
    - *Mizuho Global CMS On-Line* Time Deposit
    - *Mizuho Global CMS On-Line* Tax Payment (PIB)
    - *Mizuho Global CMS On-Line* L/C Import – Issuance
    - *Mizuho Global CMS On-Line* E-Tax Payments
    - Advisory Business Services
    - Best Receiver Services